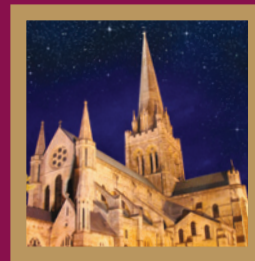


# CHICHESTER CATHEDRAL

# EVENTS

January - March 2017



For complete and up-to-date information see [www.chichestercathedral.org.uk](http://www.chichestercathedral.org.uk) or contact the Cathedral Offices:  
Tel: 01243 782595 • Email: [info@chichestercathedral.org.uk](mailto:info@chichestercathedral.org.uk). For details of services please also see website.



## January

### CONCERTS

**Tuesday 10<sup>th</sup> January** 1.10pm ★

Lunchtime Concert: **Lynden Cranham** (cello) and **Richard Barnes** (piano)

**Saturday 14<sup>th</sup> January** 6.30pm ★

Messiaen's *La Nativité* performed by Timothy Ravalde, Assistant Organist at Chichester Cathedral

**Tuesday 17<sup>th</sup> January** 1.10pm ★

Lunchtime Concert: **Tom Winpenny** (organ)

**Saturday 21<sup>st</sup> January** 7.30pm ▲

Concert: **Chichester Singers**



Chichester Singers

**Tuesday 24<sup>th</sup> January**

1.10pm ★

Lunchtime Concert: **Chichester String Ensemble**

**Tuesday 31<sup>st</sup> January**

1.10pm ★

Lunchtime Concert: **An-Ting Chang** (piano)

**Tuesday 14<sup>th</sup> February** 1.10pm ★

Lunchtime Concert: **Peter King** (organ)

**Tuesday 21<sup>st</sup> February** 1.10pm ★

Lunchtime Concert: **Portsmouth Grammar School**

**Thursday 23<sup>rd</sup> February**

7.30pm ▲

Concert: **The Sixteen: Bach Magnificat**

**Tuesday 28<sup>th</sup> February** 1.10pm ★

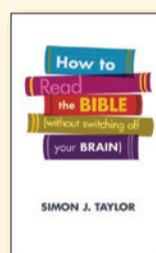
Lunchtime Concert: **Natalia Williams-Wandoch** (piano)



### LECTURES AND TALKS

**Wednesday 8<sup>th</sup> and Thursday 9<sup>th</sup> February** 9.00am – 10.00am ▲

Friends' 'Book at Breakfast' meeting with the Cathedral Chancellor: *How to Read the Bible (without switching off your brain)* by Simon J Taylor. At 4 Canon Lane.



**Monday 13<sup>th</sup> February** 6.30pm ★

'Church Schools and British Values in a Secular Society'



A Chichester Theological Society lecture by Dr Bob Bowie, Director of the National Institute for Christian Education Research, Canterbury Christ Church University. In the Cathedral nave. Free entry and all are welcome.

**Wednesday 15<sup>th</sup> February** 12.30pm ▲

Friends' 'Food for Thought' Lunch and Talk 'Fur in the Family' – a filial history of the London fur trade' by the Very Revd Nicholas Frayling, Dean Emeritus. In Vicars' Hall.



### EXHIBITIONS

**Saturday 12<sup>th</sup> November – Thursday 16<sup>th</sup> February 2017**

Open daily with free entry. 'Connection' An extraordinary glass and light sculpture by the internationally successful artist Galia Amsel.



**Saturday 28<sup>th</sup> January – Thursday 23<sup>rd</sup> February** (inclusive)

**Chichester Cathedral Labyrinth**  
An installation in the North Transept (*open daily with free entry, see January entry for more details*).

### OTHER EVENTS

**Until Friday 31<sup>st</sup> March** (inclusive)

Spring Break Offer at 4 Canon Lane – 25% discount on accommodation. Book on: 01243 813585

**Friday 3<sup>rd</sup> February** 10.00am – 12 noon ✦

Friends' Monthly Coffee Morning in the Dresden Room, 4 Canon Lane

**Friday 17<sup>th</sup> February** 10.30am – 12noon ▲

**Illuminating Chichester Cathedral Tour Series 2017: 'Chichester's Pioneers of Education'**. £7.00 including coffee & biscuits.

**Monday 20<sup>th</sup> February** 10.00am – 3.00pm

**Family Activity: 'Danger! Dragons!'**

Join us to create your own fiery dragon in clay or collage materials or make a dragon mask. Search for dragon like creatures and see how many you can track on the Cathedral trail. £2.50 per child. No need to book, just drop in.



## March

### CONCERTS

**Tuesday 7<sup>th</sup> March**

1.10pm ★

Lunchtime Concert: **Nick Shipman** (clarinet and piano)

**Tuesday 14<sup>th</sup> March**

1.10pm ★

Lunchtime Concert: **Fujita Trio**



Fujita Trio

**Saturday 18<sup>th</sup> March** 7.30pm ▲

Concert: **Virtuosi of Houston**

**Tuesday 21<sup>st</sup> March** 1.10pm ★

Lunchtime Concert: **Neil Crossland** (piano)

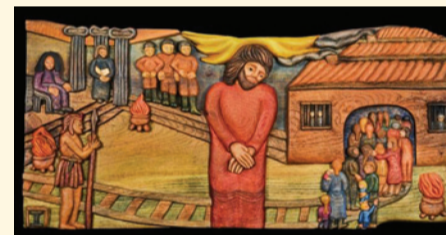
**Thursday 23<sup>rd</sup> March** 7.00pm ★

**Prebendal School Lent Concert**

### EXHIBITION In the North Transept

**Wednesday 1<sup>st</sup> March – Monday 17<sup>th</sup> April** (inclusive)

Open daily with free entry. 'The Stations of the Holocaust' by artist Jean Lamb. This thought-provoking exhibition during Lent comprises of



14 'stations' or pieces of art which have been carved out of elm wood, cast and then painted. Each one illustrates part of the story of Jesus' life from the time of his trial to the time of his burial; within each piece is also carved an image from the Holocaust showing the Jewish people as they were forced into ghettos, humiliated, tortured and executed. Jean carved a 'station' during Lent each year from 1999.

### LECTURES AND TALKS

**Tuesday 28<sup>th</sup> March** 12.30pm ▲

Friends' 'Food For Thought' Lunch and Talk: 'Volunteering: serving others or serving oneself?' by Kayti Draper. In Vicars' Hall.

### OTHER EVENTS

**Until Friday 31<sup>st</sup> March** (inclusive)

Spring Break Offer at 4 Canon Lane – 25% discount on accommodation. Book on: 01243 813585.

**Friday 3<sup>rd</sup> March** 10.00am – 12 noon ✦

Friends' Monthly Coffee Morning in Vicars' Hall

**Friday 24<sup>th</sup> March** 10.30am – 12noon ▲

**Illuminating Chichester Cathedral Tour Series 2017: 'The Mystery of Baptism explored through art'**. £7.00 including coffee & biscuits.

**Sunday 26<sup>th</sup> March** 12noon – 2.00pm

Mothering Sunday Lunches at 4 Canon Lane. £24.00 for three courses with coffee. Book on 01243 813585.

Chichester Cathedral is open daily from 7.15am – 6.30pm (Monday – Saturday) and 7.15am – 5.00pm (Sunday). Entry is free.

### Symbol key

- ★ Entry is free
- ✦ Chichester Cathedral Friends' events. Open to all. Tel: 01243 812990 Email: [ccf.eventsec@gmail.com](mailto:ccf.eventsec@gmail.com)
- ▲ Tickets available on: 0333 666 3366 [www.chichestercathedral.org.uk](http://www.chichestercathedral.org.uk)

### EXHIBITIONS

**Saturday 12<sup>th</sup> November – Thursday 16<sup>th</sup> February 2017**

Open daily with free entry.

'Connection' An extraordinary glass and light sculpture by the internationally successful artist Galia Amsel.



**Saturday 28<sup>th</sup> January – Thursday 23<sup>rd</sup> February** (inclusive)

**Chichester Cathedral Labyrinth**

An installation in the North Transept (open daily with free entry). This simple installation provides a labyrinthine path for visitors to walk, inviting them to experience this ancient symbol.



### OTHER EVENTS

**Tuesday 3<sup>rd</sup> January – Friday 31<sup>st</sup> March** (inclusive)

Winter Break Offer at 4 Canon Lane – 25% discount on accommodation. Book on: 01243 813585.

**Friday 6<sup>th</sup> January** 10.00am – 12 noon ✦

Friends' Monthly Coffee Morning in Vicars' Hall

**Wednesday 11<sup>th</sup> January** 12.30pm ✦

Chichester Cathedral Friends' Epiphany Lunch with Guest Speaker Daniel Evans, Artistic Director, Chichester Festival Theatre.

**Friday 27<sup>th</sup> January** 10.30am – 12noon ▲

**Illuminating Chichester Cathedral Tour Series 2017: 'When the Parliamentarians visited the Cathedral'** The first in a series of five tours led by Chichester Cathedral Guides. £7.00 including coffee & biscuit.

## February

### CONCERTS

**Saturday 4<sup>th</sup> February** 7.00pm ▲

**Nos Miseri Homines.** Eight outstanding professional singers perform music for Candlemas by candlelight.

**Tuesday 7<sup>th</sup> February** 1.10pm ★

Lunchtime Concert: **Pavlos Carvalho** (cello) and **Warren Mailley-Smith** (piano)